



Cromer Artspace brings great art to the heart of our seaside town. The Bigger Picture places printed artworks from national and regional collections around Cromer. Our fully accessible Artspace On the Prom presents changing exhibitions, showing that inspiring, high quality art also belongs outside big cities - it can thrive here on the coast.

Our projects are designed for everyone. We work to make art easy to enjoy, support local businesses, and help creativity become a natural part of everyday life in Cromer for residents and visitors.

Artspace on the Prom is located at the far west end of the seafront, open daily 11am - 4pm- entry free

cromer-artspace.uk
Registered Charity 1191946

This exhibition is a unique collaboration between two coastal galleries with shared beliefs of community engagement. All pictures are printed life-size, offering a special viewing experience, free for all to enjoy.

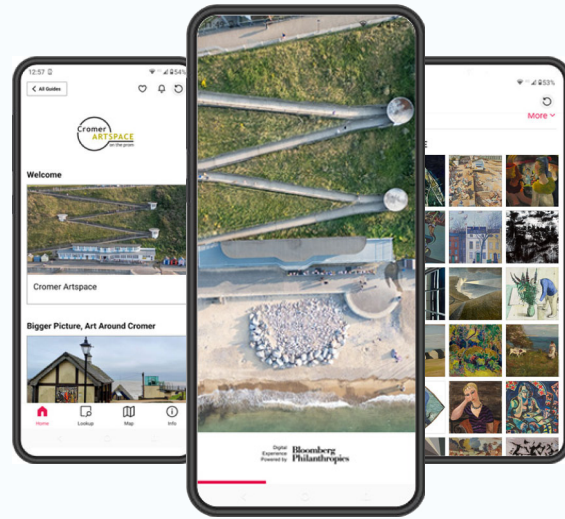


Collecting and exhibiting contemporary art for more than 100 years, Towner Eastbourne presents exhibitions of national and international importance for audiences in Eastbourne, the UK and beyond. Towner's collection is best known for its modern British art, and a growing collection of international contemporary art. Towner was Museum of the Year 2020 and hosted Turner Prize 2023.

townereastbourne.org.uk

Enhance your visit

Enhance your visit to Cromer and engage with Cromer Artspace from anywhere with our free digital guide on Bloomberg Connects. Featuring audio tours, detailed images, and more, there's something for everyone to enjoy.



Grateful thanks to all wall owners, local supporters and sponsors.



Circumstances beyond our control may impact the exhibition. For up-to-date information see website: cromer-artspace.uk



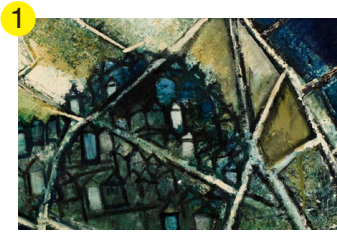
The Bigger Picture

Art around Cromer



DETAILS FROM THE 24 FULL SIZE REPRODUCTIONS OF PAINTINGS FROM TOWNER EASTBOURNE - TAKE A WALK AROUND CROMER TO DISCOVER THEM

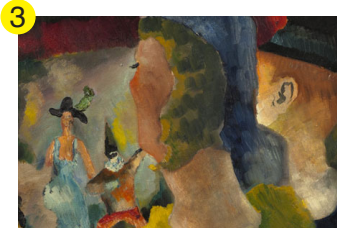
All art in this leaflet is used by kind permission of Towner Eastbourne, the artists and/or their estates



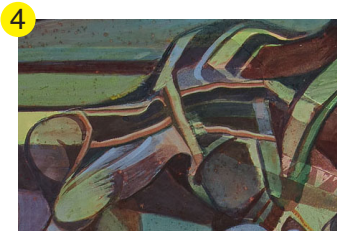
1 Harold Mockford
Eastbourne, 1958
An abstract and surreal perspective of Eastbourne, controversial when first exhibited there but now much loved by the local community.



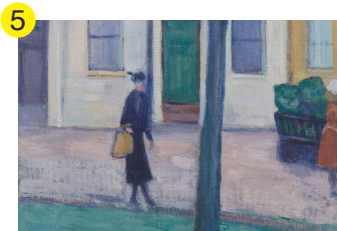
2 Heather Brennan
Corporation Blue, 1983
Brennan has a love of the beach and in this piece is concerned with the all over pattern made by figures, shadows and structures.



3 David Gommon
Music Hall, c 1934
Gommon had a lifelong interest in the theatre and this colourful scene has a fashionable audience engrossed in stage performers.



4 Wilfred Avery
Chain Reaction, 1996
Avery's paintings, neither real nor surreal, were developed from his interest in psychology, creating enigmatic images often unifying landscape and the male body.



5 Stanislaw de Karłowska
Barrage Balloons, 1939
This bold and colourful work might be unrecognisable as war time were it not for the barrage balloons and crossed tape on the windows.



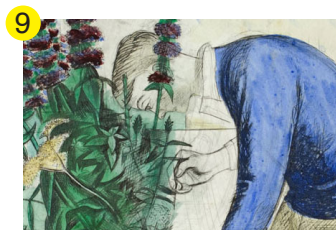
6 John Virtue
Landscape No. 268, 1994-95
Informed by his travels and walks in many locations including Norfolk, Virtue portrays the magnitude of the sea, sky and weather.



7 Clare Woods
Nowhere Fast, 2020
This work is from a series of domestic windows painted by Woods from inside during the covid lockdown, capturing the limited surroundings.



8 Eric Ravilious
Beachy Head, 1939
The downland hills, lighthouse and white chalk cliffs of Beachy Head, Eastbourne's world-famous landmark and an iconic feature of the Sussex coastline.



9 Edward Bawden
The Boy, Eric Ravilious in his studio at Redcliffe Road, 1929
This portrayal of Ravilious has him working on the design for a mural which he and his friend Bawden jointly produced.



10 William Nicholson
Judd's Farm, 1912
This once isolated clifftop farm was on the 650 acres which were developed in the 1920s to become the town of Peacehaven.



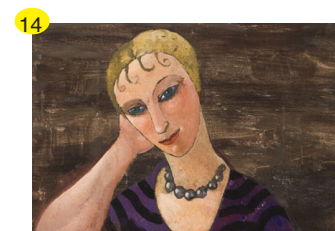
11 Phelan Gibb
Paysage, 1907
Gibb lived in Paris for 25 years and this colourful landscape was perhaps influenced by the work of Paul Cézanne.



12 Thomas James Lloyd
Milk for the Calves, 1881
Lloyd painted this view on a cliff top on the Isle of Wight looking north-east across Sandown Bay towards the chalk headland at Culver.



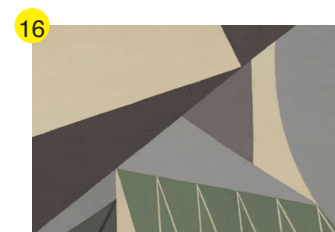
13 Laetitia Yhap
Paul carrying Robin Huss accompanied by his dog Saxon, 1979-80
A busy scene from a Hastings beach of fisherman, his dog and Robin Huss, a local term for dog fish.



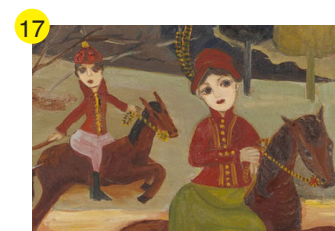
14 Christopher Wood
Girl on a Chair, c 1926-8
Wood was influenced by modern French art; this is a portrait that uses simplified form and flattened space to make the everyday feel unexpectedly present.



15 Kathleen Walne
Girl in Caravan, 1935
Kathleen Walne's eye for colour, the female form and her love of pattern and fashion is evident in this early work.



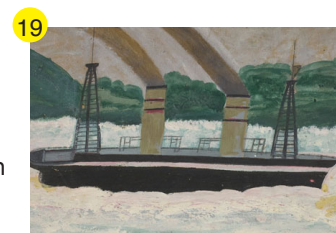
16 Margaret Benecke
Composition: Eastbourne, 1935
The inspiration for this work are the Sussex landmarks of the Seven Sisters cliffs and Beachy Head.



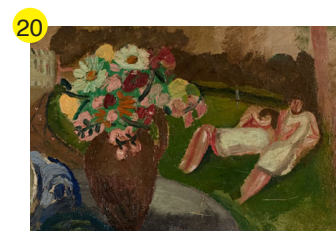
17 Ilsa Rodmell
The Chase, The Hunt, undated
Rodmell painted with vivacity and her deliberately 'naïve' depiction features wide-eyed women doll-like in their appearance.



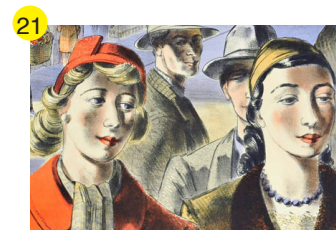
18 William Gear
Winter Landscape, 1949
In this abstract landscape, Gear shows the jagged lines of winter, bare tree branches, and black ice paired with the softness of pinks and blues found in winter skies.



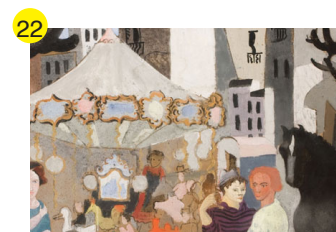
19 Alfred Wallis
Steamer, exhibited 1934
Painted on scrap card, *Steamer* evokes a stormy coastal day at sea as the vessel ploughs steadily ahead through choppy waves.



20 Frances Hodgkins
Still Life, c 1929
A busy domestic setting with bowls, a fabric and a bright floral arrangement and two reclining figures in the background.



21 Barnett Freedman
'People' for Lyons & Co. Lithographs, 1947
Freedman designed and lithographed this cheerful image from a print series commissioned by the famous Lyons teashops.



22 Christopher Wood
Fair at Neully, 1922
A depiction of a lively French village celebrating a typical rural holiday in a naïve style.



23 Edward Wadsworth
Bronze Ballet, 1940
The ship's screws on the quay hold the stage by themselves with the twisting blades providing a ballet-like feel.



24 Emma Stibbon
Hope Gap, 2022
The stairs leading from a beach west of Eastbourne, later made unsafe after a storm in 2023, are the subject of this highly dramatic work.