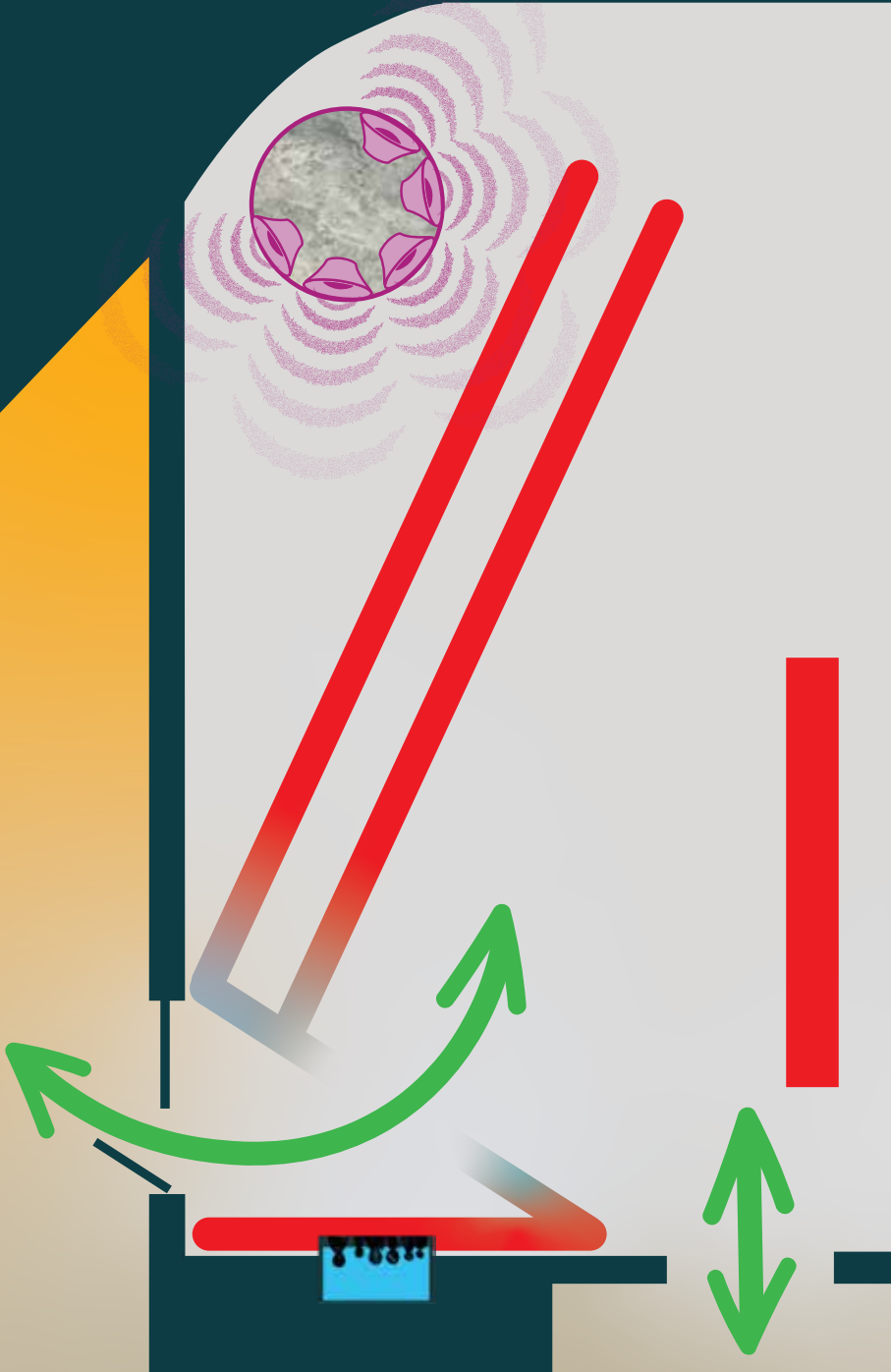


# Map: *Ghislainne Leung*



# Map Key

 ENTER / EXIT



You can exit through the doors under the pipes



LIVE feed video of a staff only space (Art Store)

  
**DO NOT TOUCH**  
any art work



Work on floor



  
Light

Bright striplights cover the ceiling shining down



  
Sound

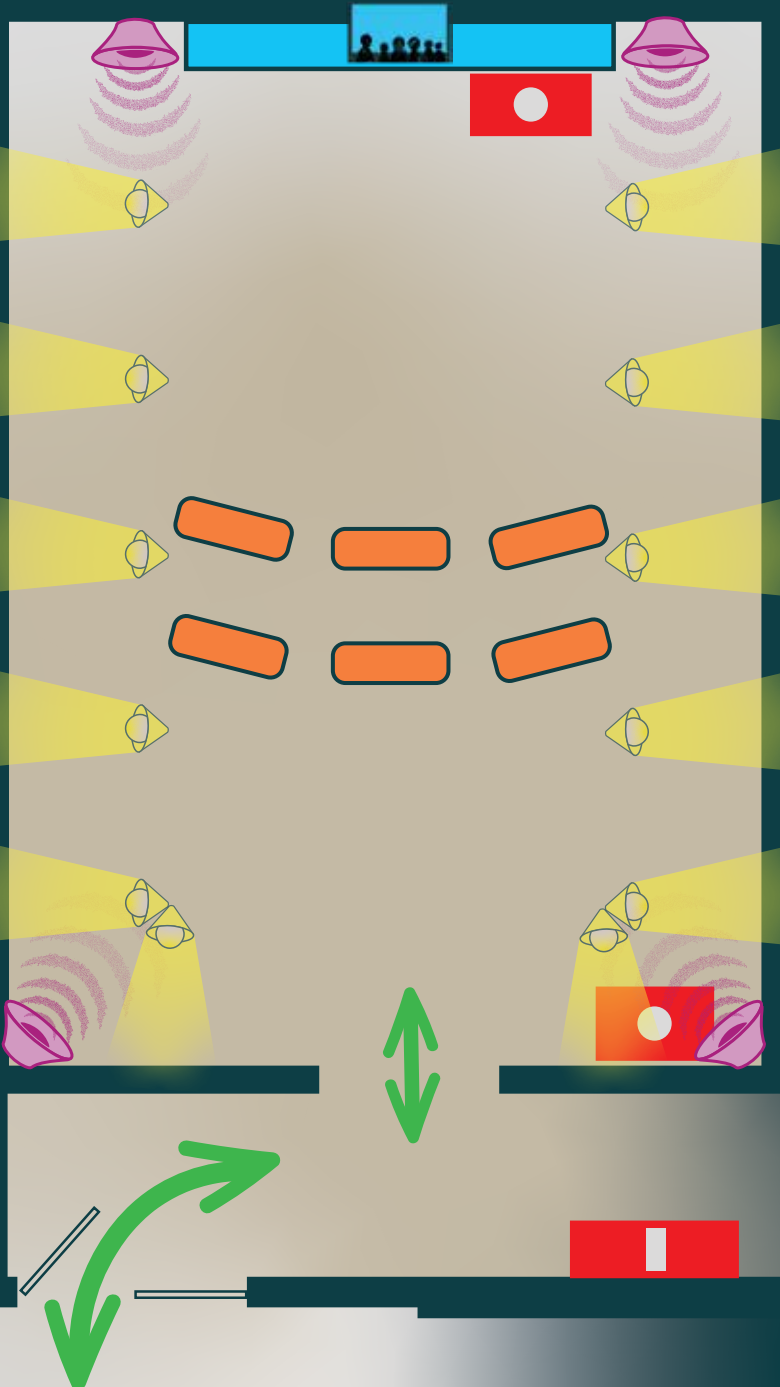
Loud splashing waterfall



Water on floor

Careful near the waterfall

# Map: *Rory Pilgrim*



# Map Key



ENTER / EXIT



Low light



Sound in the films:



Sound



Music



Singing



Talking



Light



Coloured lights softly change with the film



Spotlights onto walls



Seats



Benches with cushions + backs (facing the films)



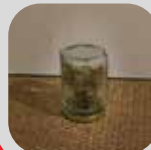
DO NOT TOUCH

any art work

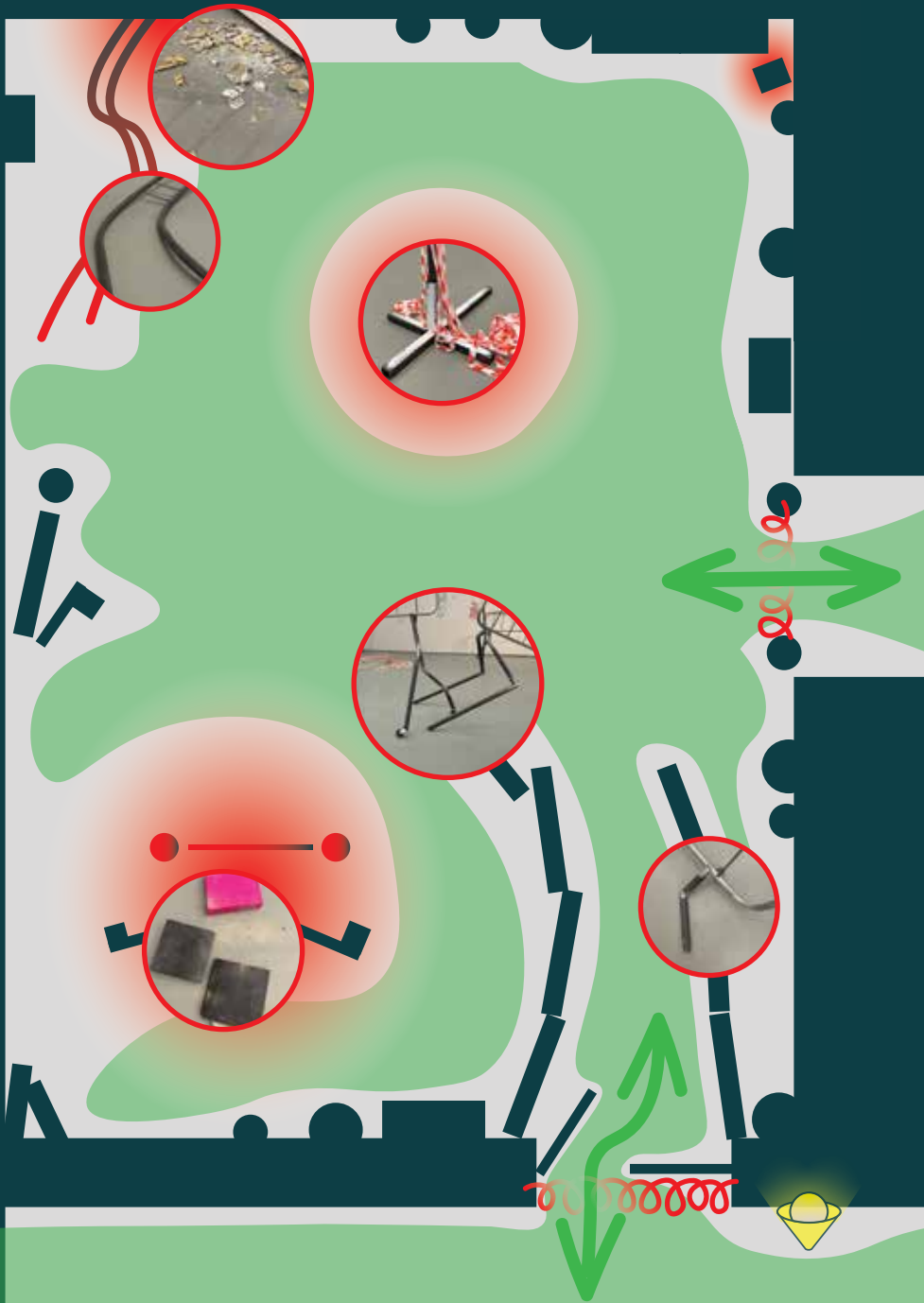
Work coming out from the wall



Work on floor



# Map: *Jesse Darling*

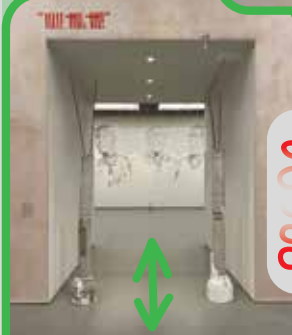


# Map Key

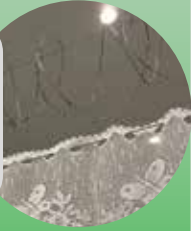


ENTER / EXIT

Razor wire



Razor wire



You have to pass under to access this space



Light

Outside work:  
soft light shines at the wall



Careful:

lots of work on the floor



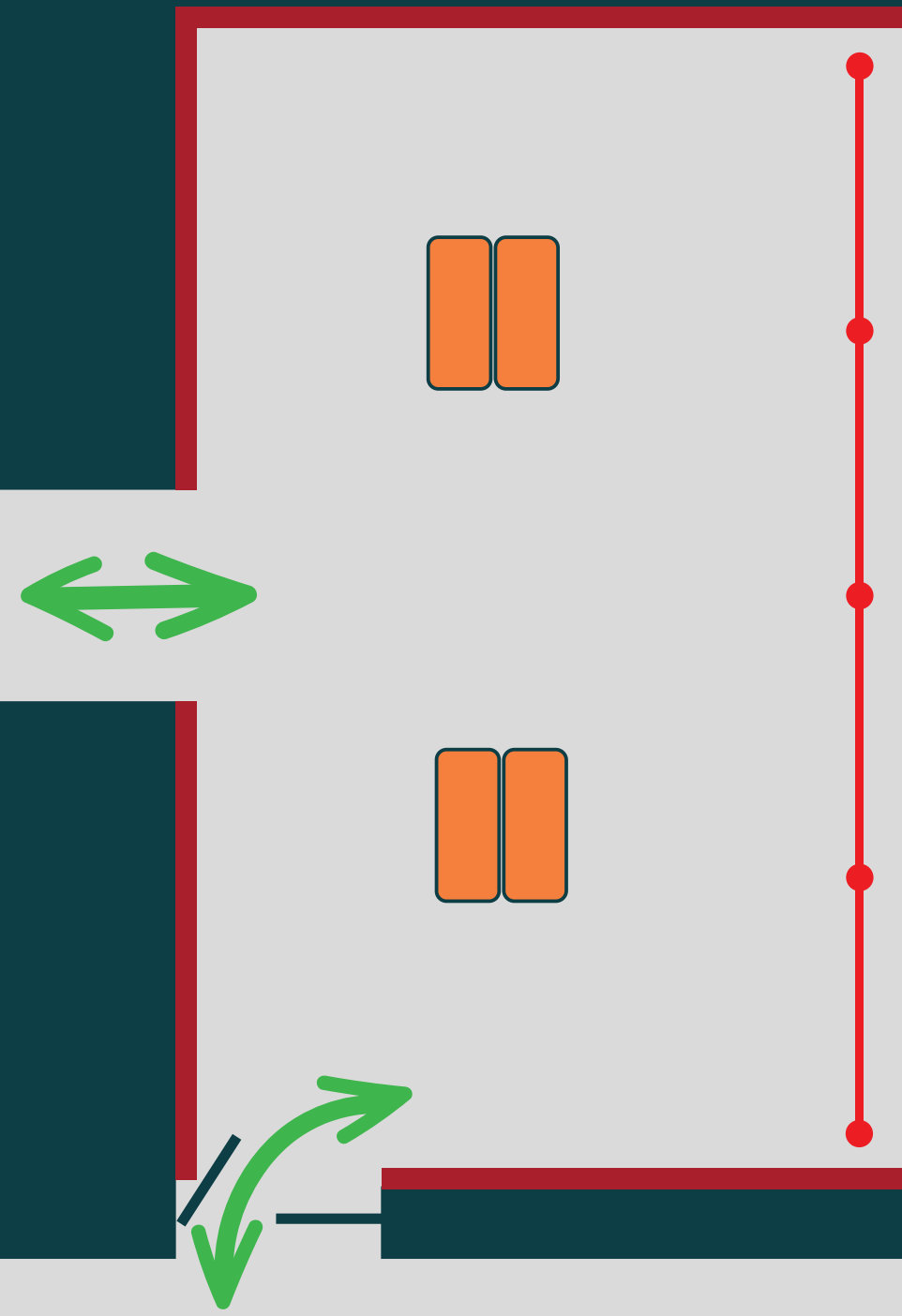
DO NOT TOUCH

any art work



Accessible space

# Map: *Barbara Walker*



# Map Key



You can go in and out both ways



Drawings own the space



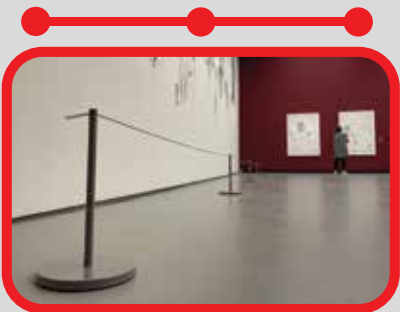
Benches with padded seats to sit and look



Panel lights across the ceiling and spotlights onto the walls



Bold colour walls



Careful of the wire (to stop anyone stepping in charcoal / touching the drawing)